

Evidence of Performance

Airborne sound insulation of building components



Test Report

No. 14-002633-PR01

(PB 5-H01-04-en-01)

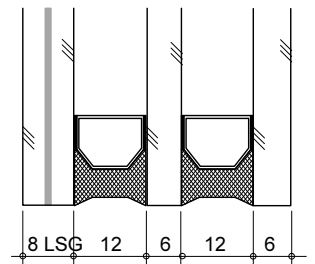
Client **SAINT-GOBAIN POLSKA Sp.Z.o.o.**
ODDZIAL GLASSOLUTIONS
ul. Kolejowa 1
32-312 Jaroszewiec
Poland

Basis

EN ISO 10140-1: 2010
+A1: 2012
EN ISO 10140-2: 2010
EN ISO 717-1: 2013

Product	Insulating glass unit
Designation	SGG Climatop Protect
Dimensions (w x h)	1,230 mm × 1,480 mm
Construction	8 LSG/12/6/12/6
Gas filling	Argon
Are related mass	50.0 kg/m ²
Special features	-/-

Representation



Instructions for use

This test report serves to demonstrate the airborne sound insulation of a building component.

Applicable for Germany.

R_w corresponds to $R_{w,F}$ for DIN 4109, Annex 1, Table 40

Weighted sound reduction index R_w
Spectrum adaptation terms C and C_{tr}



$$R_w (C; C_{tr}) = 40 (-2; -6) \text{ dB}$$

Validity

The data and results given relate solely to the tested and described specimen.

Testing the sound insulation does not allow any statement to be made on further characteristics of the present construction regarding performance and quality.

ift Rosenheim
07.11.2014

Dr. Joachim Hessinger, Dipl.-Phys.
Head of Testing Department
Building Acoustics

Bernd Saß, Dipl.-Ing. (FH)
Operating Testing Officer
Building Acoustics

Notes on publication

The ift-Guidance Sheet "Conditions and Guidance for the Use of ift Test Documents" applies. The cover sheet can be used as abstract.

Contents

The test report contains a total of 7 pages:

- 1 Object
 - 2 Procedure
 - 3 Detailed results
 - 4 Instructions for use
- Data sheet (1 page)



1 Object

1.1 Description of test specimen (All dimensions in mm)

Component	Insulating glass unit
Product designation	SGG Climatop Protect
External dimensions (W x H)	1,230 mm × 1,480 mm
Visible size (W x H)	1,200 mm × 1,450 mm
Total thickness	
On the edge	44.5 mm
In the middle of pane	44.4 mm
Area related mass kg/m ²	50.0 kg/m ²
Construction	8 LSG/12/6/12/6
Configuration of laminated glass	4 mm Float, 0.76 mm PVB- film, 4 mm Float
Type, manufacturer of interlayer	SGG Stadip Protect 44.2 (manufacturer specifications)
Pane temperature in °C	22°C
Spacer	
Material	Aluminium
Manufacturer	ALU-PRO
Edge seals	Two planes, total width 11-12 mm
External type	Poliver
Manufacturer	Fenzi
Internal type	PIB
Manufacturer	Fenzi
Edge cover	Edge cover 5-6 mm
Gas filling in cavity	According to analysis at ift
Type of gas	Argon
Volume in %	Cavity 1: 96% / cavity 2: 86%

The description is based on inspection of the test specimen at **ift** Laboratory for Building Acoustics. Item designations / numbers as well as material specifications were provided by the client.

1.2 Mounting in test rig

Test rig	Window test rig with suppressed flanking transmission acc. to EN ISO 10140-5: 2010; the test rig includes a 5 cm continuous acoustic break which is sealed in the test opening with closed-cell permanently resilient sealant.
Mounting of test specimen	Test specimen mounted by ift Laboratory for Building Acoustics
Mounting conditions	The unit was fitted at a distance of 5 mm into a wooden frame of 25 mm x 25 mm cross section. The cavity between test rig and glazing beads was completely filled with plastic sealant type Perennator 2001 S grey.
Mounting position	According to EN ISO 10140-1:2010+A1:2012 Annex D
Preparation	Storage of the glazing one day before testing in the test rig for conditioning.

Airborne sound insulation of building components

Test Report 14-002633-PR01 (PB 5-H01-04-en-01) dated 07.11.2014

Client **SAINT-GOBAIN POLSKA Sp.Z.o.o.**
ODDZIAL GLASSOLUTIONS, 32-312 Jaroszowiec (Poland)**2 Procedure****2.1 Sampling**

Sampling	The test specimen were selected by the client
Quantity	1
Manufacturer	Saint-Gobain Polska Sp z o.o. Oddzial GLASSOLUTIONS in Jaroszowiec Ul. Szklanych Domow 1 42-530 Dabrowa Gornicza
Manufacturing plant , Site of manufacturing	Ul. Kolejowa 1 32-312 Jaroszowiec
Date of manufacture / date of sampling	15 th to 30 th September 2014, Position 8
Responsible for sampling	Mrs. Anna Pustul
Delivery at ift	13 th October 2014 by the client via forwarding agency
ift Registration Number	37966/5

2.2 Process

Basis

- EN ISO 10140-1:2010 + A1 : 2012 Acoustics; Laboratory measurement of sound insulation of building elements - Part 1: Application rules for specific products (ISO 10140-1:2010+Amd.1:2012)
- EN ISO 10140-2:2010 Acoustics; Laboratory measurement of sound insulation of building elements - Part 2: Measurement of airborne sound insulation (ISO 10140-2:2010)
- EN ISO 717-1: 2013 Acoustics; Rating of sound insulation in buildings and of building elements - Part 1: Airborne sound insulation

Corresponds to the national German standard:

DIN EN ISO 10140-1:2012-05, DIN EN ISO 10140-2:2010-12 and DIN EN ISO 717-1 : 2013-06

Procedure and scope of measurement are in conformity with the principles of the working group of sound insulation testing bodies approved by the national building supervisory authorities in cooperation with the standardization committee NA 005-55-75-AA (subcommittee UA 1 - DIN 4109).

Boundary conditions	As required in the standard.
Deviation	There are no deviations from the test procedure and/or test conditions.
Test noise	Pink noise
Measuring filter	One-third-octave band filter

Airborne sound insulation of building components

Test Report 14-002633-PR01 (PB 5-H01-04-en-01) dated 07.11.2014

Client **SAINT-GOBAIN POLSKA Sp.Z.o.o.**
ODDZIAL GLASSOLUTIONS, 32-312 Jaroszowiec (Poland)**Measurement limits**

- Low frequencies** The dimensions of the receiving room full fills the recommended size for testing in the frequency range from 50 Hz to 80 Hz as per EN ISO 10140-4:2010 Annex A (informative). A moving loudspeaker was used.
- Background noise level** The background noise level in the receiving room was determined during measurement and the receiving room level L_2 corrected by calculation as per EN ISO 10140-4: 2010 Clause 4.3.
- Maximum sound insulation** The maximum sound insulation of the test set-up was at least 15 dB higher than the measured sound reduction index of the test specimen. Not corrected by calculation.

Measurement of

reverberation time Arithmetical mean: two measurements each of 2 loudspeaker and 3 microphone positions (a total of 12 independent measurements).

Measurement equation A $A = 0,16 \cdot \frac{V}{T} \text{ m}^2$

Measurement of sound level

difference Minimum of 2 loudspeaker positions and rotating microphones.

Measurement equation R $R = L_1 - L_2 + 10 \cdot \lg \frac{S}{A} \text{ in dB}$

KEY

A	Equivalent absorption area in m^2
L_1	Sound pressure level source room in dB
L_2	Sound pressure level receiving room in dB
R	Sound reduction index in dB
T	Reverberation time in s
V	Volume of receiving room in m^3
S	Testing area of the specimen in m^2

2.3 Test equipment

Device	Type	Manufacturer
Integrating sound meter	Type Nortronic 840	Norsonic-Tippkemper
Microphone preamplifiers	Type 1201	Norsonic-Tippkemper
Microphone unit	Type 1220	Norsonic-Tippkemper
Calibrator	Type 1251	Norsonic-Tippkemper
Dodecahedron loudspeakers	Type 229, 96 Ohm	Norsonic-Tippkemper
Amplifier	Type 235, 100 W	Norsonic-Tippkemper
Rotating microphone boom	Type 231-N-360	Norsonic-Tippkemper

The **ift** Laboratory for Building Acoustics participates in comparative measurements at the Physikalisch-Technische Bundesanstalt (PTB) in Braunschweig every three years, the last one was in April 2013. The sound level meter used, Series No. 17848, was calibrated by the Dortmund Eichamt (calibration agency) on 19 January 2012. The calibration is valid until



31 December 2014. The sound level meter used was DKD calibrated by the company Norsonic Tippkemper (DKD - Deutscher Kalibrierdienst "German Calibration_Service") on 25 March 2013.

2.4 Testing

Date 14th of October 2014

Operating Testing Officer Mr. Bernd Saß

3 Detailed results

The values of the measured sound reduction index of the tested insulating glass unit are plotted as a function of frequency in the annexed data sheet and tabled.

As per EN ISO 717-1 the weighted sound reduction index R_w and the spectrum adaptation terms C and C_{tr} for the frequency range 100 Hz to 3150 Hz obtained by calculation are as follows:

$$R_w(C; C_{tr}) = 40 (-2; -6) \text{ dB}$$

According to EN ISO 717-1 the following additional spectrum adaptation terms are obtained

$C_{50-3,150} = -2 \text{ dB}$	$C_{100-5,000} = -1 \text{ dB}$	$C_{50-5,000} = -1 \text{ dB}$
$C_{tr,50-3,150} = -6 \text{ dB}$	$C_{tr,100-5,000} = -6 \text{ dB}$	$C_{tr,50-5,000} = -6 \text{ dB}$

4 Instructions for use

4.1 Test value

Basis

DIN 4109:1989-11 Sound insulation in buildings, requirements and verifications
 DIN 4109 Bbl1/A1:2003-09 Sound insulation in buildings, examples and calculation methods correction A1

For verification of sound insulation according to DIN 4109, Annex 1 : A1:2003-09, Table 40 the weighted sound reduction index R_w corresponds to the test value $R_{w,P, GLASS}$

$$R_{w,P, GLASS} = 40 \text{ dB}$$

4.2 Laminated glass

The sound reduction of laminated glass depends on the temperature of the environment. If the temperature is lower than the test temperature the sound reduction index may be reduced.

Airborne sound insulation of building components

Test Report 14-002633-PR01 (PB 5-H01-04-en-01) dated 07.11.2014

Client **SAINT-GOBAIN POLSKA Sp.Z.o.o.**
ODDZIAL GLASSOLUTIONS, 32-312 Jaroszowiec (Poland)



4.3 Test standards

The standard series EN ISO 10140:2010 supersedes those parts of the standard series EN ISO 140 that were applicable until the respective date and describe laboratory tests. According to the two standard series, the test methods are identical.

ift Rosenheim
Laboratory for Building Acoustics
07.11.2014

Sound reduction index according to ISO 10140 - 2

Laboratory measurements of airborne sound insulation of building elements



Client: **SAINT-GOBAIN POLSKA Sp.Z.o.o.**
ODDZIAL GLASSOLUTIONS, 32-312 Jaroszowiec (Poland)

Product designation SGG Climatop Protect

Design of test specimen

Insulating glass unit
 External dimensions 1,230 mm × 1,480 mm
 Pane configuration 8 LSG/12/6/12/6
 Gas filling in cavity Argon
 Area related mass 50.0 kg/m²
 Pane temperature 22°C

Test date 14th of October 2014
 Test surface S 1.25 m × 1.50 m = 1.88 m²
 Test rig as per EN ISO 10140-5
 Partition wall Double-leaf concrete wall
 Test noise pink noise
 Volumes of test rooms V_S = 109.9 m³
 V_R = 101.3 m³

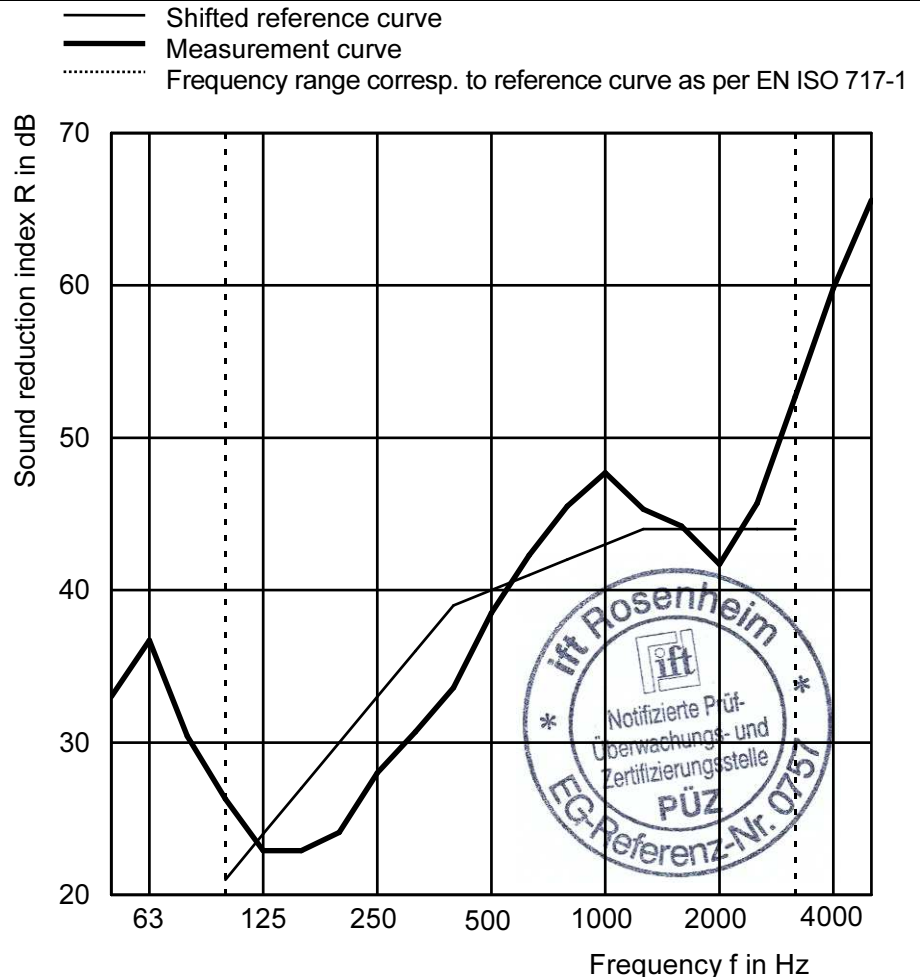
Maximum sound reduction index
 R_{w,max} = 62 dB (related to test surface)

Mounting conditions

Glass mounted in test opening and held on both sides by glazing beads (25 mm × 25 mm); gap between test rig, glazing and glazing beads was completely filled with plastic sealant

Climate in test rooms 21 °C / 61 % RH
 Static air pressure 958 hPa

f in Hz	R in dB
50	33.0
63	36.7
80	30.4
100	26.3
125	22.9
160	22.9
200	24.1
250	28.0
315	30.7
400	33.6
500	38.5
630	42.3
800	45.5
1,000	47.7
1,250	45.3
1,600	44.2
2,000	41.7
2,500	45.7
3,150	52.7
4,000	59.8
5,000	65.6



Rating according to EN ISO 717-1 (in third-octave bands):

R_w (C; C_{tr}) = 40 (-2;-6) dB
 C_{50-3,150} = -2 dB; C_{100-5,000} = -1 dB; C_{50-5,000} = -1 dB
 C_{tr,50-3,150} = -6 dB; C_{tr,100-5,000} = -6 dB; C_{tr,50-5,000} = -6 dB

Test report no.: 14-002633-PR01 (PB 5-H01-04-en-01)

Page 7 of 7, Data Sheet no. 5

ift Rosenheim
 Laboratory for Building Acoustics
 7. November 2014

Bernd Saß
 Dipl. Ing. (FH) Bernd Saß
 Operating Testing Officer